

**MACEVI** *1928*

**CutOut**

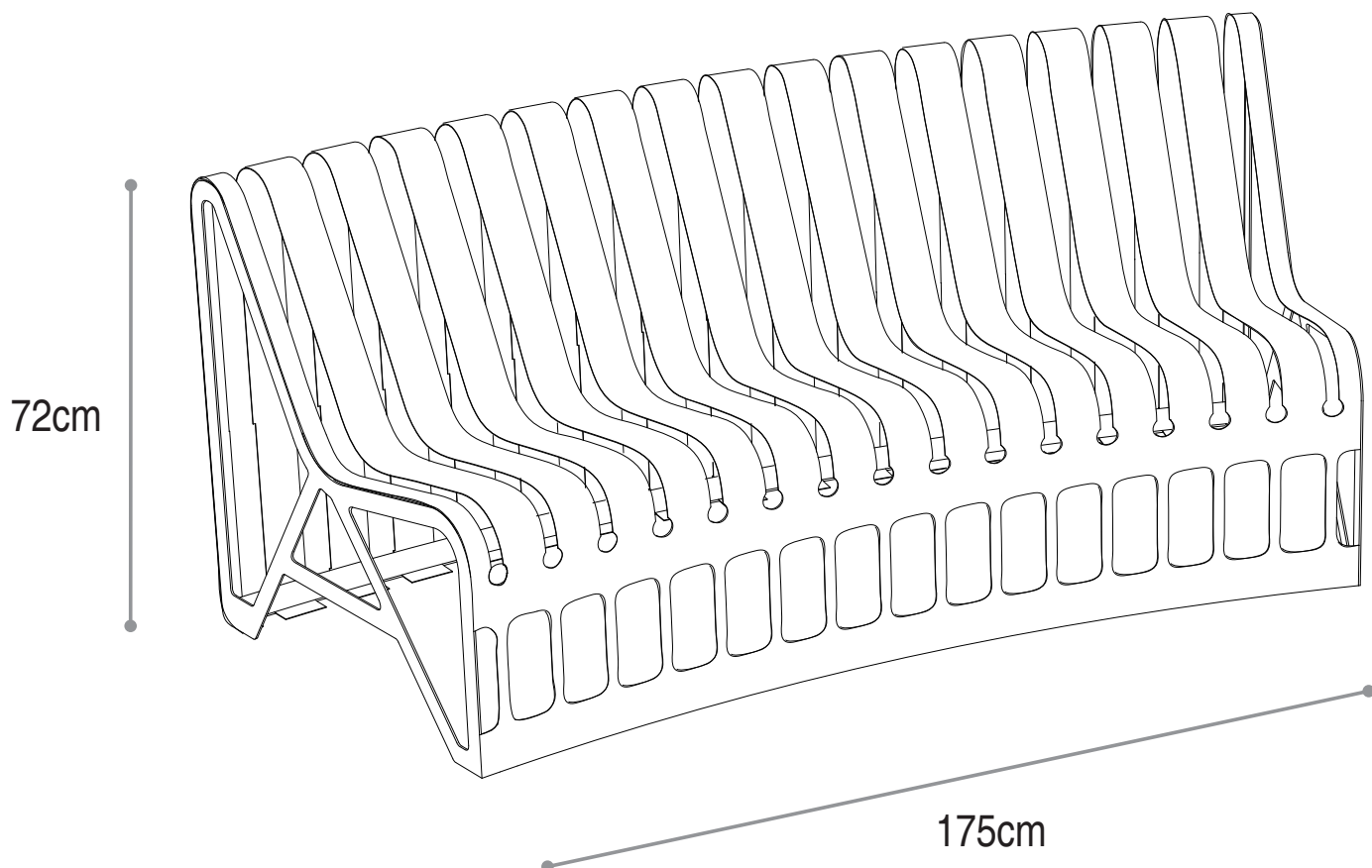
# CutOut

BENCH



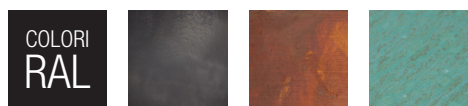
## DESCRIPTION

Steel bench and litter bin treated with cataphoresis and powder coating. Furnished with three wooden seats. Curved and ergonomic structure obtained from the harmonic flexion of a two-dimensional metal sheet. The circular shape of the bench and its modularity stimulate the interaction between users, revealing the true nature of a concept which arises from two-dimensional strictness and evolves into tapered lines. The litter bin follows the same production logic, enhancing the look and giving verticality to the furniture. The finesse of transformation.



## MATERIALS

### METAL



DESIGNER

**Omri  
Revesz**

[www.omrirevesz.com](http://www.omrirevesz.com)







**Macevi1928**

Via Andrea Mantegna, 16,  
31021 Mogliano Veneto TV

**[www.macevi1928.com](http://www.macevi1928.com)**

