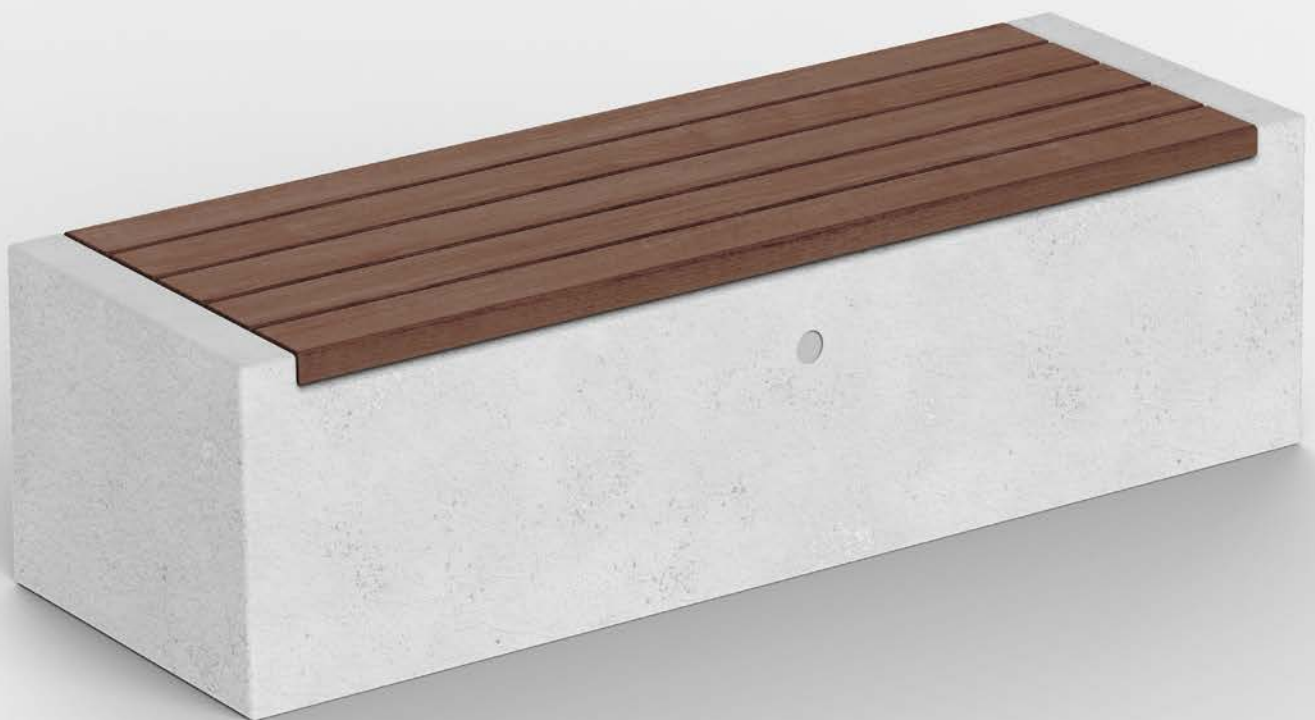


macevi 1928

Italica

Italica

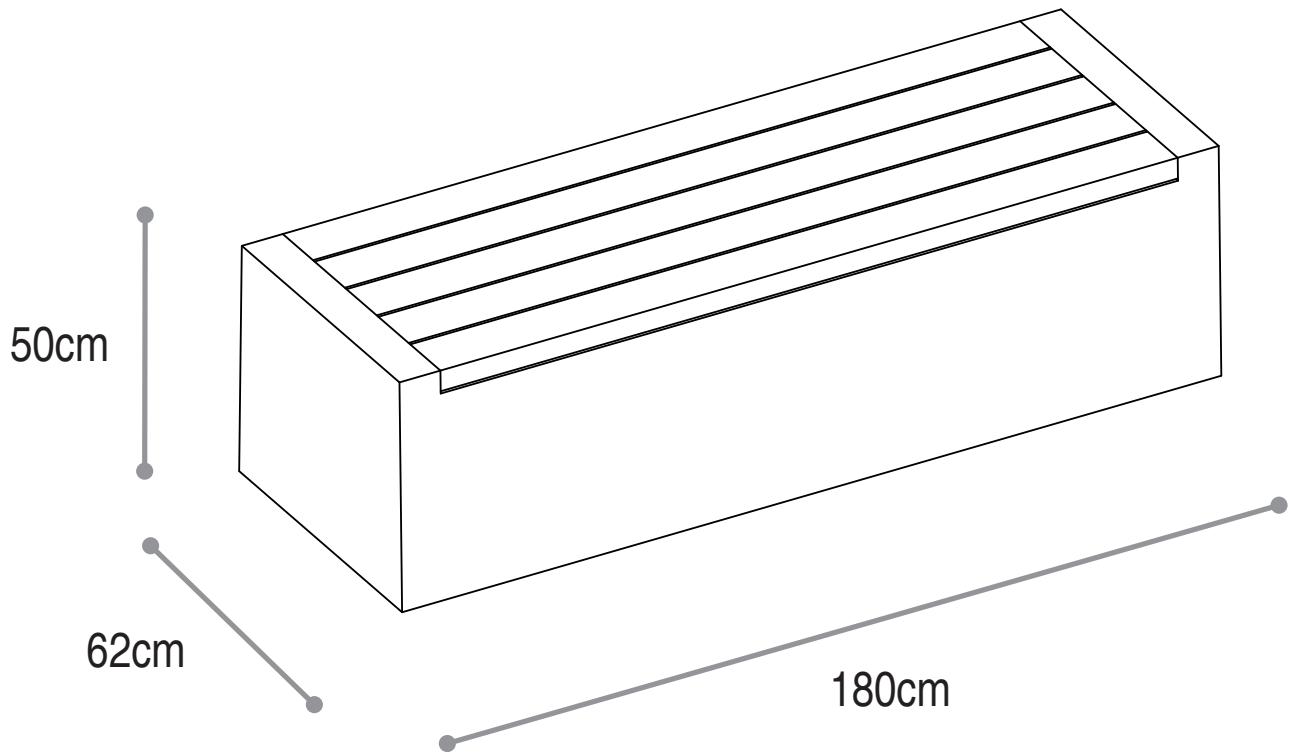
BENCH



DESCRIPTION

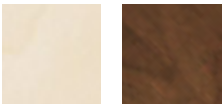
Collection in UHPC.

Fast and neat lines provide the object of the right appeal, making it adaptable to any context. The wooden slats define the seat, and the great combination with UHPC concrete makes this collection natural and solid. It is possible to reserve a part of the bench to a steel desk that acts as a table in order to enhance and stimulate social interaction.

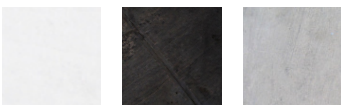


MATERIALS

WOOD



UHPC



Italica

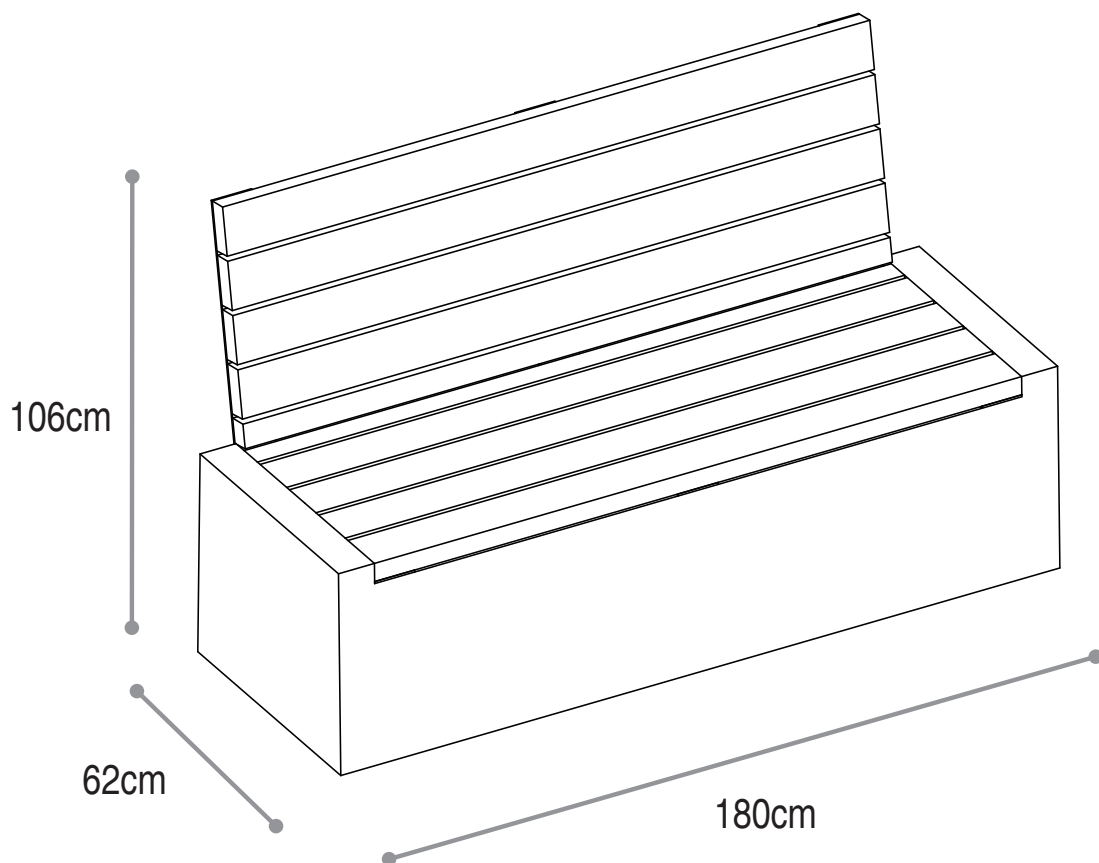
BENCH



DESCRIPTION

Collection in UHPC.

Fast and neat lines provide the object of the right appeal, making it adaptable to any context. The wooden slats define the seat, and the great combination with UHPC concrete makes this collection natural and solid. It is possible to reserve a part of the bench to a steel desk that acts as a table in order to enhance and stimulate social interaction.

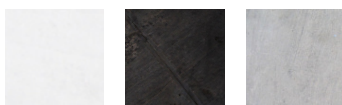


MATERIALS

WOOD



UHPC



Italica

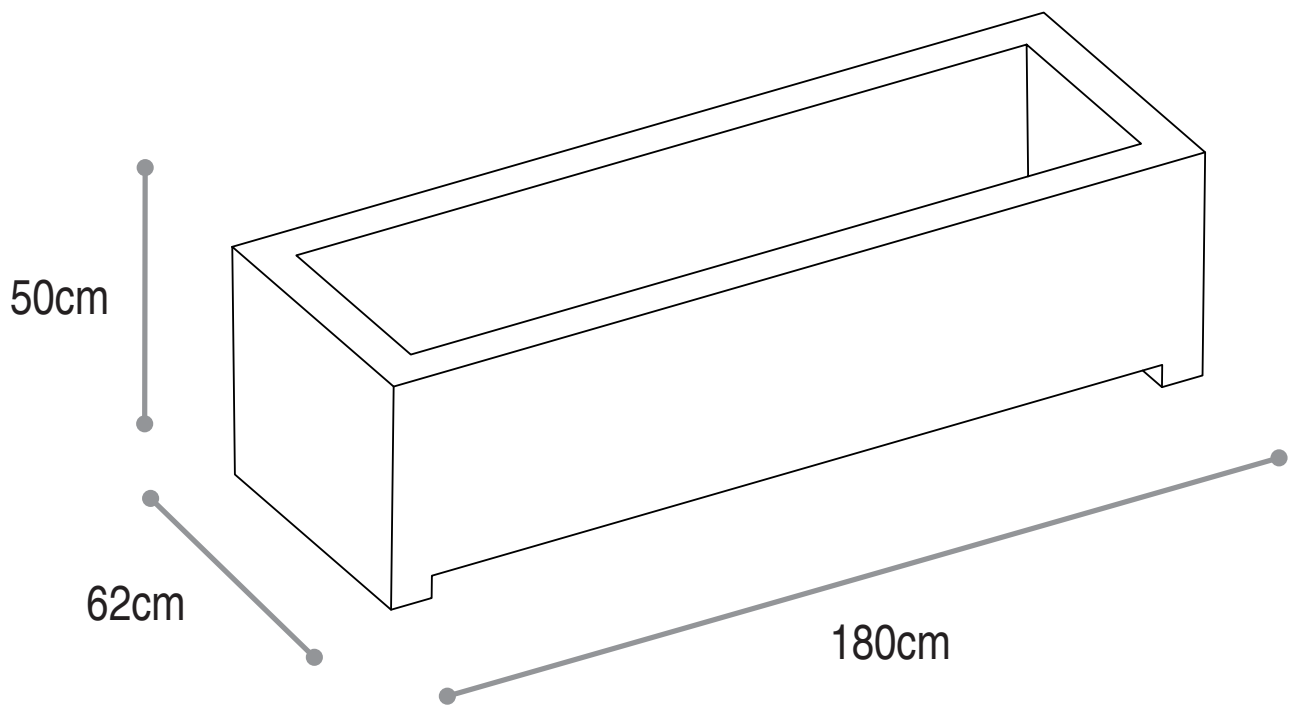
PLANTER



DESCRIPTION

Collection in UHPC.

Fast and neat lines provide the object of the right appeal, making it adaptable to any context. The wooden slats define the seat, and the great combination with UHPC concrete makes this collection natural and solid. It is possible to reserve a part of the bench to a steel desk that acts as a table in order to enhance and stimulate social interaction.



MATERIALS

UHPC





DESIGNER
Macevi
RD

www.macevi1928.com



Macevi1928

Via Andrea Mantegna, 16,
31021 Mogliano Veneto TV

www.macevi1928.com

